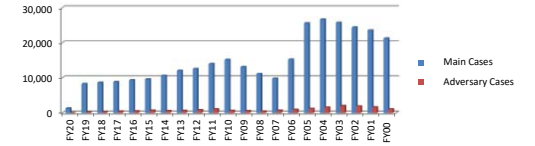


**UNITED STATES BANKRUPTCY COURT
FOR THE EASTERN DISTRICT OF PENNSYLVANIA**

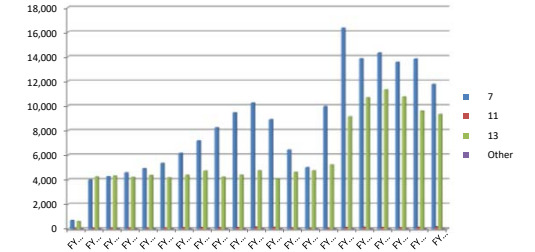
Fiscal Years 2020 to 2000

(Fiscal year period is October 1 through September 30)

Filings	FY20	FY19	FY18	FY17	FY16	FY15	FY14	FY13	FY12	FY11	FY10	FY09	FY08	FY07	FY06	FY05	FY04	FY03	FY02	FY01	FY00
Main Cases	1,322	8,283	8,650	8,881	9,361	9,598	10,638	12,020	12,576	13,968	15,159	13,097	11,118	9,785	15,229	25,565	26,661	25,749	24,404	23,542	21,260
Adversary Cases	43	282	314	428	493	690	605	627	825	1,061	654	574	475	676	959	1,229	1,607	1,991	1,902	1,623	1,107



Chapters (Main Cases)	FY20	FY19	FY18	FY17	FY16	FY15	FY14	FY13	FY12	FY11	FY10	FY09	FY08	FY07	FY06	FY05	FY04	FY03	FY02	FY01	FY00
7	695	3,981	4,260	4,581	4,916	5,332	6,151	7,170	8,238	9,447	10,236	8,887	6,419	4,994	9,951	16,320	13,837	14,306	13,553	13,804	11,758
11	11	65	75	93	86	104	109	136	116	129	164	146	96	66	66	129	152	138	118	150	181
13	616	4,232	4,313	4,206	4,357	4,160	4,374	4,708	4,220	4,384	4,740	4,064	4,602	4,725	5,211	9,115	10,671	11,300	10,731	9,586	9,320
Other	0	5	2	1	2	2	4	6	2	8	19	0	1	0	1	1	0	5	2	2	1



Counties (Main Cases)	FY20	FY19	FY18	FY17	FY 16	FY 15	FY14	FY13	FY12	FY11	FY10	FY09	FY08	FY07	FY06	FY05	FY04	FY03	FY02	FY01	FY00
Berks	115	775	792	794	851	849	957	1,084	1,209	1,278	1,535	1,375	1,119	835	1,403	2,244	2,053	2,059	1,806	1,671	1,428
Bucks	175	983	1,062	1,098	1,144	1,167	1,306	1,554	1,648	1,925	2,112	1,950	1,545	1,138	1,460	2,501	2,382	2,538	2,482	2,520	2,364
Chester	98	580	593	573	606	614	731	855	925	1,024	1,057	867	645	529	730	1,313	1,236	1,269	1,311	1,274	1,094
Delaware	136	844	894	922	944	924	1,012	1,124	1,160	1,319	1,372	1,174	989	831	1,494	2,511	2,429	2,464	2,341	2,352	2,010
Lancaster	97	500	575	575	572	604	769	873	955	1,185	1,252	1,229	1,012	860	1,384	2,191	1,777	1,897	1,696	1,527	1,253
Lehigh	119	620	627	615	639	752	889	1,005	996	1,147	1,221	1,229	950	828	701	1,215	1,845	1,706	1,661	1,462	1,382
Montgomery	152	1,032	1,037	1,100	1,171	1,292	1,289	1,480	1,618	1,805	2,079	1,601	1,235	1,007	1,482	2,491	2,495	2,650	2,475	2,491	2,247
Northampton	84	580	570	549	599	627	725	818	919	991	1,043	932	713	633	949	1,403	1,268	1,250	1,181	1,210	997
Philadelphia	343	2,346	2,483	2,637	2,814	2,753	2,962	3,209	3,135	3,289	3,476	3,019	3,031	3,251	5,112	9,065	9,314	9,960	9,650	9,114	8,561
Out of State / Foreign	3	23	17	18	21	16	18	18	10	5											

