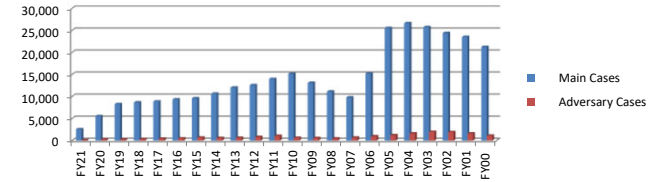


**UNITED STATES BANKRUPTCY COURT  
FOR THE EASTERN DISTRICT OF PENNSYLVANIA**

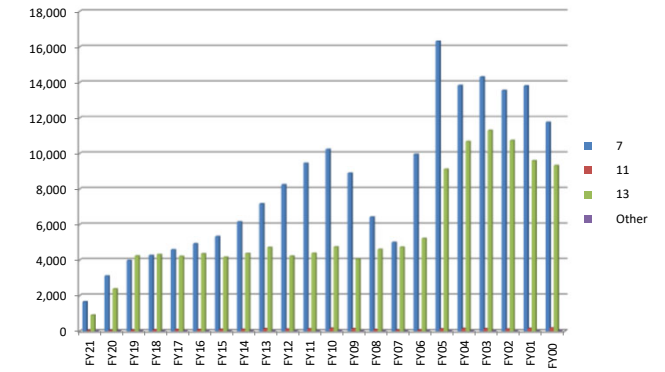
**Fiscal Years 2021 to 2000**

*(Fiscal year period is October 1 through September 30)*

Filings	FY21	FY20	FY19	FY18	FY17	FY16	FY15	FY14	FY13	FY12	FY11	FY10	FY09	FY08	FY07	FY06	FY05	FY04	FY03	FY02	FY01	FY00
Main Cases	2,586	5,534	8,283	6,650	8,881	9,361	9,598	10,638	12,020	12,576	13,968	15,169	13,097	11,118	9,785	15,229	25,568	26,661	25,749	24,404	23,542	21,260
Adversary Cases	86	290	282	314	428	493	690	605	627	825	1,061	654	574	475	676	959	1,229	1,607	1,991	1,902	1,623	1,107



Chapters (Main Cases)	FY21	FY20	FY19	FY18	FY17	FY16	FY15	FY14	FY13	FY12	FY11	FY10	FY09	FY08	FY07	FY06	FY05	FY04	FY03	FY02	FY01	FY00
7	1,647	3,108	3,981	4,260	4,581	4,916	5,332	6,151	7,170	8,238	9,447	10,236	8,887	6,419	4,994	9,951	16,320	13,837	14,306	13,553	13,804	11,758
11	32	44	65	75	93	86	104	109	136	116	129	164	146	96	66	66	129	152	138	118	150	181
13	905	2,376	4,232	4,313	4,206	4,357	4,160	4,374	4,708	4,220	4,384	4,740	4,064	4,602	4,725	5,211	9,115	10,671	11,300	10,731	9,586	9,320
Other	2	2	5	2	1	2	2	4	6	2	8	19	0	1	0	1	1	0	5	2	2	1



Counties (Main Cases)	FY21	FY20	FY19	FY18	FY17	FY16	FY15	FY14	FY13	FY12	FY11	FY10	FY09	FY08	FY07	FY06	FY05	FY04	FY03	FY02	FY01	FY00
Berks	269	541	775	792	794	851	849	967	1,084	1,209	1,278	1,535	1,375	1,119	835	1,403	2,244	2053	2,059	1,806	1,671	1,428
Bucks	307	685	983	1,062	1,098	1,144	1,167	1,306	1,554	1,648	1,925	2,112	1,950	1,545	1,138	1,460	2,501	2382	2,538	2,482	2,520	2,364
Chester	168	373	580	593	573	606	614	731	855	925	1,024	1,057	867	645	529	730	1,313	1236	1,269	1,311	1,274	1,094
Delaware	266	528	844	894	922	944	924	1,012	1,124	1,160	1,319	1,372	1,174	989	831	1,494	2,511	2429	2,464	2,341	2,352	2,010
Lancaster	199	404	500	575	575	572	604	769	873	955	1,185	1,252	1,229	1,012	860	1,384	2,191	1777	1,897	1,696	1,527	1,253
Lehigh	265	479	620	627	615	639	752	869	1,005	996	1,147	1,221	950	828	701	1,215	1,845	1706	1,661	1,462	1,382	1,302
Montgomery	311	658	1,032	1,037	1,100	1,171	1,292	1,289	1,480	1,619	1,805	2,079	1,601	1,235	1,007	1,482	2,491	2495	2,650	2,475	2,491	2,247
Northampton	200	431	580	570	549	599	627	725	818	919	991	1,043	932	713	633	949	1,403	1268	1,250	1,181	1,210	997
Philadelphia	589	1,420	2,346	2,483	2,637	2,814	2,753	2,962	3,209	3,135	3,289	3,476	3,019	3,031	3,251	5,112	9,065	9314	9,960	9,650	9,114	8,561
Out of State / Foreign	12	15	23	17	18	21	16	18	18	10	5											

