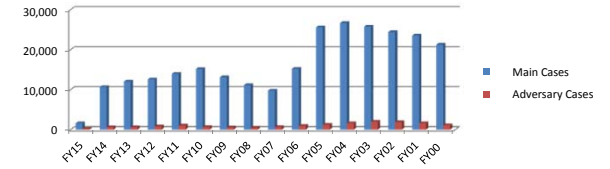


**UNITED STATES BANKRUPTCY COURT
FOR THE EASTERN DISTRICT OF PENNSYLVANIA**

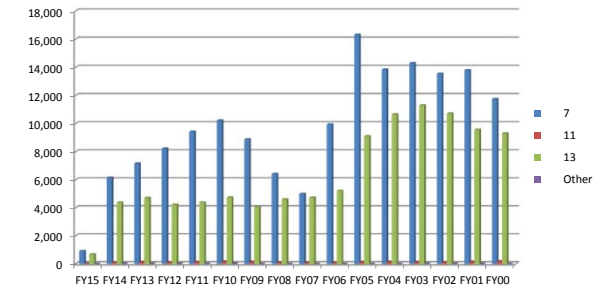
Fiscal Years 2015 to 2000

(Fiscal year period is October 1 through September 30)

Filings	FY15	FY14	FY13	FY12	FY11	FY10	FY09	FY08	FY07	FY06	FY05	FY04	FY03	FY02	FY01	FY00
Main Cases	1,599	10,638	12,020	12,576	13,968	15,159	13,097	11,118	9,785	15,229	25,565	26,661	25,749	24,404	23,542	21,260
Adversary Cases	233	605	627	825	1,061	654	574	475	676	959	1,229	1,607	1,991	1,902	1,623	1,107



Chapters (Main Cases)	FY15	FY14	FY13	FY12	FY11	FY10	FY09	FY08	FY07	FY06	FY05	FY04	FY03	FY02	FY01	FY00
7	909	6,151	7,170	8,238	9,447	10,236	8,887	6,419	4,994	9,951	16,320	13,837	14,306	13,553	13,804	11,758
11	17	109	136	116	129	164	146	96	66	66	129	152	138	118	150	181
13	673	4,374	4,708	4,220	4,384	4,740	4,064	4,602	4,725	5,211	9,115	10,671	11,300	10,731	9,586	9,320
Other	0	4	6	2	8	19	0	1	0	1	1	0	5	2	2	1



Counties (Main Cases)	FY 15	FY14	FY13	FY12	FY11	FY10	FY09	FY08	FY07	FY06	FY05	FY04	FY03	FY02	FY01	FY00
Berks	149	957	1,084	1,209	1,278	1,535	1,375	1,119	835	1,403	2,244	2,053	2,059	1,806	1,671	1,428
Bucks	197	1,306	1,554	1,648	1,925	2,112	1,950	1,545	1,138	1,460	2,501	2,382	2,538	2,482	2,520	2,364
Chester	88	731	855	925	1,024	1,057	867	645	529	730	1,313	1,236	1,269	1,311	1,274	1,094
Delaware	149	1,012	1,124	1,160	1,319	1,372	1,174	989	831	1,494	2,511	2,429	2,464	2,341	2,352	2,010
Lancaster	96	769	873	955	1,185	1,252	1,229	1,012	860	1,384	2,191	1,777	1,897	1,696	1,527	1,253
Lehigh	120	869	1,005	996	1,147	1,221	950	828	701	1,215	1,845	1,706	1,661	1,462	1,382	1,302
Montgomery	206	1,289	1,480	1,619	1,805	2,079	1,601	1,235	1,007	1,482	2,491	2,495	2,650	2,475	2,491	2,247
Northampton	107	725	818	919	991	1,043	932	713	633	949	1,403	1,268	1,250	1,181	1,210	997
Philadelphia	484	2,962	3,209	3,135	3,289	3,476	3,019	3,031	3,251	5,112	9,065	9,314	9,960	9,650	9,114	8,561
Out of State / Foreign	3	18	18	10	5											

